

Name: _____

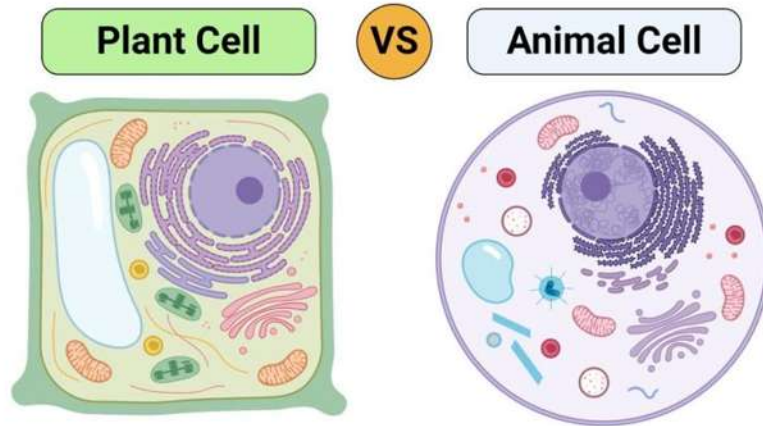
Date: _____

Chapter 13.1
Plant Diversity

Complete your answers in **BLUE**, comic sans, size 11 font

What is the difference between the animal and the plant cell?

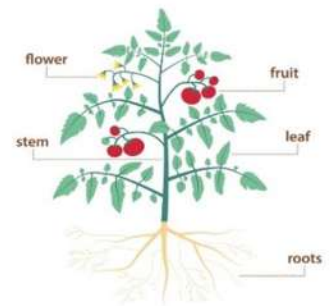
1. Fill in the table below to compare between animal and plants cells:



Animal Cells	Plant Cells

Plant Structure and Function

2. What are the main structures found in most plants?
- Roots
 - Stems
 - Flowers
3. What is the main function of roots in a plant?
- Absorbs water and minerals from soil
 - Some taproots store food
 - Additional support



Name: _____

Date: _____

4. Using the table below to drag the words from the word bank to the appropriate root type in the table.

Taproots	Prop Roots	Fibrous Roots
<div>Radish</div> <div>Can store food for the plant</div> <div>Fig Trees</div> <div>Oak Trees</div> <div>Carrots</div>	<div>Give extra support to the plant</div> <div>Corn</div>	<div>Onion</div> <div>Grass</div> <div>Spread out and absorb large amounts of water</div>

5. What are the main functions of stems in plants?

- Holds leaves, flowers, and fruits
- Conducts water and food to different parts
- Some stems store food like potatoes



6. What are the main functions of leaves in plants?

- Makes food for the plant
- Gas exchange and water vapour exchange through stomata



Name: _____

Date: _____

7. How do plant structures such as roots, stems and leaves ensure the plants survival? Use the table below to describe what each does.

Roots	Stems	Leaves
<ul style="list-style-type: none">a. Absorbs water and minerals from soilb. Some taproots store foodc. Additional support.	<ul style="list-style-type: none">a. Holds leaves, flowers, and fruitsb. Conducts water and food to different partsc. Some stems store food like potatoes	<ul style="list-style-type: none">a. Makes food for the plantb. Gas exchange and water vapour exchange through stomata