

Science Quiz 1 Review

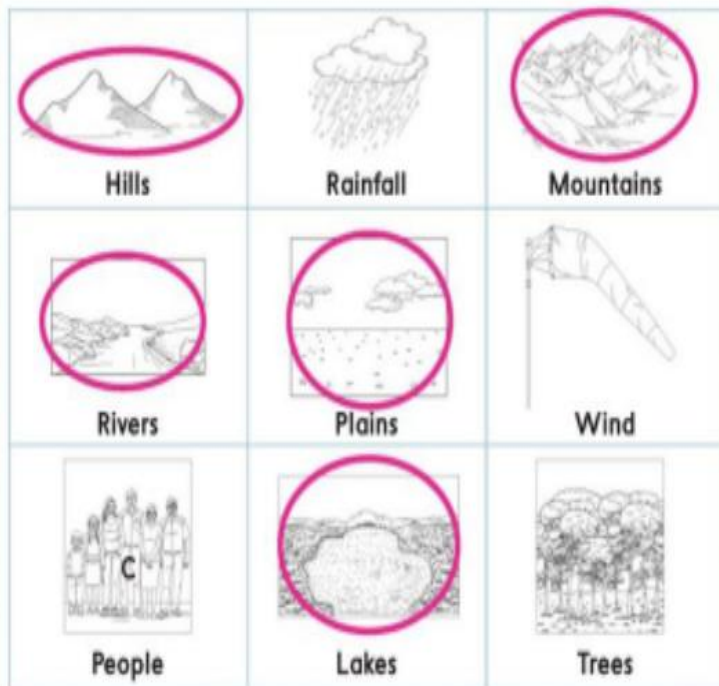


Vocabulary

Island	An area of land surrounded by water
Plain	Land that is wide and flat
Landform	Is one of the shapes of Earth's surface.
Continent	The biggest areas of land
Mountains	The tallest kind of landform on Earth
Valley	Low land between two mountains or hills
Landscapes	The stretch of land that can be seen from place
Slop	High in place and low in another
Map	A drawing of an area of earth's surface.
Compass rose	A symbol used on a map to show direction
Symbols	Shows the location of certain features on a map

Mapping Earth's Surface

Circle the things you might see on a map of Earth's surface.



Explain your thinking.

Sample answer: I circled things found on Earth.
Some maps show roads and buildings too.

You will revisit the Page Keeley Science Probe later in the lesson.

VOCABULARY

Look for
these words
as you read:

compass rose

landscape

map

slope

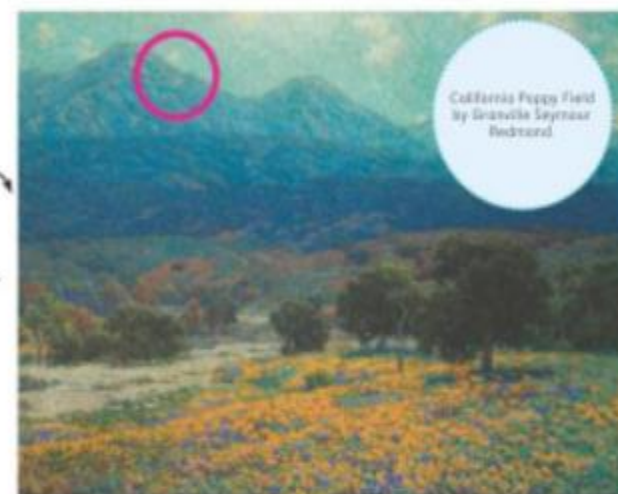
symbol

Landscapes

What do you think of when you hear the word *landscape*? You might think of plants and flowers. A **landscape** is the stretch of land that can be seen from a place.

The landscape in one area might be high and on a **slope**, or slant. The landscape in another area might be low and flat. It might be covered with trees or water. What is the landscape like around you?

Sample answer:



Artists and cartographers study landscapes.

1. Describe the landscape in the painting.

Sample answer: The landscape has mountains and hills.

2. Circle an area on the painting that shows a slope in the landscape.

Maps

SOCIAL STUDIES Connection One way to show what the land is like is to make a map. A **map** is a drawing of an area of Earth's surface. It can show you what the land and water are like in an area.

Scientists Use Maps

Many scientists depend on maps. They use maps to organize information and to share information with others.

Look at the map below. It shows what the land is like in different areas. The rough, tan areas show high land. The smooth, yellow and green areas show low land.



Read a Map

Maps can also show cities, roads, and buildings. Most maps have a map key. A map key uses **symbols** to show where certain features are located. Many maps include a **compass rose** to show direction.

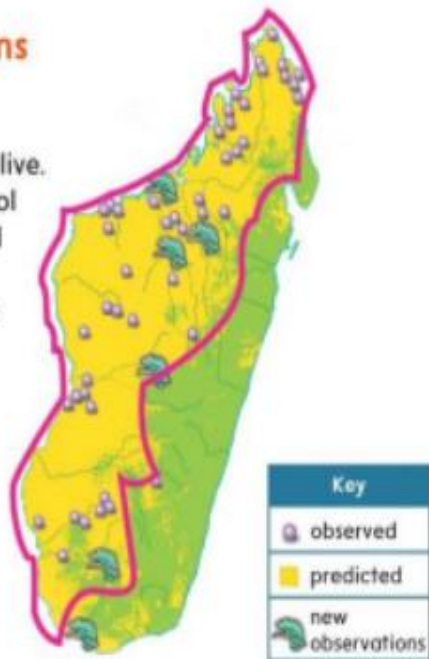


Talk About It

What questions can this map help you answer?

Maps Answer Questions


Maps help scientists answer questions. This map answers questions about where lizards live. Look at the key. A lizard symbol marks each new place a lizard was found. A purple symbol marks each place a lizard was observed.



1. Use the map key. Find the area that shows where scientists predicted they would find lizards. Circle it.

 Look at the map on page 11. What patterns do you notice? Write a question about a pattern you see.

Sample answer: Why are areas of high land near water?

 **GO ONLINE** Watch the video *Learning from Maps* to see how different maps can answer questions.



Landscape Shapes

Some landscapes may remind you of shapes. Look at the photo below. What shapes do you see in the land?



Use shapes to draw the landscape on a separate sheet of paper.

1. **MATH Connection** What shapes did you use to model the landscape?

Sample answer: I used rectangles to show groups of trees and a big part of a mountain. I used triangles to show the slope of a mountain and other mountains.

 **Talk About It**

What shapes do you see in the land around you? Tell a partner.





LESSON 1

Review

EXPLAIN THE PHENOMENON

How can you describe this land?

Summarize It

Describe the shape of this land.

Sample answer: This land has a slope. I can tell because it is high in one spot and low in another.



Three-Dimensional Thinking

- Look at the map below. Which sentence can you tell is true by reading the map?
 - Ted lives on a hill.
 - Ted lives west of the pond.
 - C** The land around Ted's school has grass.
 - The land south of Ted's school has trees.
- Ted wants to make a model of the map. How can Ted show that he lives on a hill?

He can put his house in an area that is higher than other places in the model.



Revisit the Page Keeley Science Probe earlier in the lesson. Has your thinking changed? If so, explain how it has changed.

VOCABULARY

Look for these words as you read:

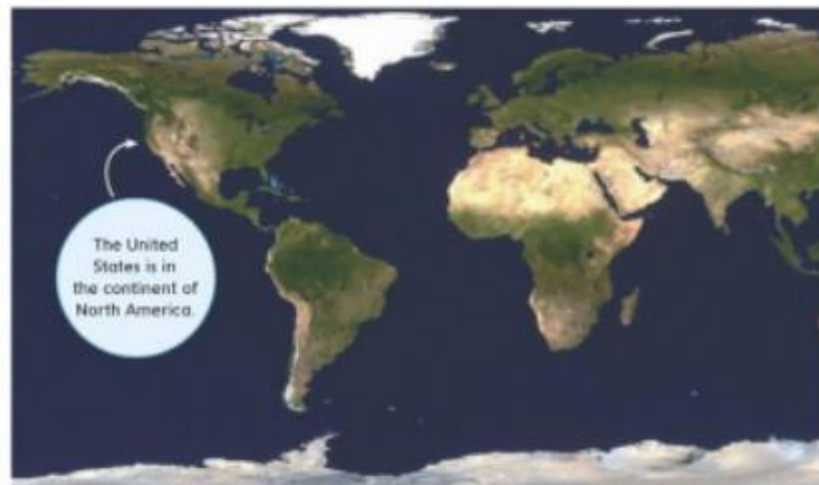
canyon continent island landform
mountain plain valley

Earth's Surface

Earth has many different forms of land and water. A **landform** is one of the shapes of Earth's surface. The biggest areas of land are called **continents**.

Islands

An **island** is an area of land surrounded by water. Islands can be small or large. Many islands often appear close together in a chain.

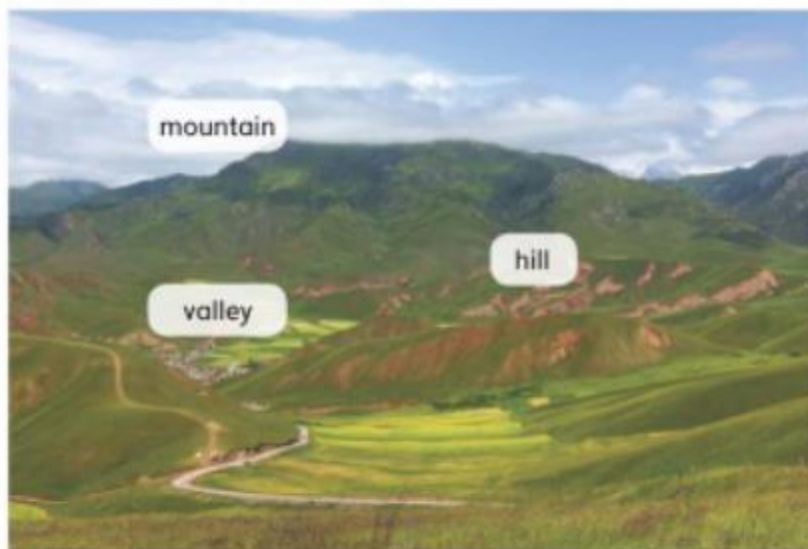


Copyright © McGraw-Hill Education. 1025815701, 1025815702

Mountains, Hills, and Valleys

The tallest kind of landform on Earth is a **mountain**. Mountains often have a pointed top and steep sides. Hills are mounds of land and rock. They are tall, too, but they are not as tall as mountains.

A **valley** is the low land between two mountains or hills. A valley can be deep and narrow or long and wide.



1. What symbols could you use to show mountains, valleys, and hills on a map? Draw and label them here.

Symbols should be labeled and should reflect shapes of mountains, hills, and valleys.



Plains

A **plain** is land that is wide and flat. It has no hills or mountains. A plain can be a good place for farms. Plains can stretch for miles.

GO ONLINE

Watch the video *Landforms* to explore different types of landforms on Earth's surface.

2. Why do you think plains are good places for farms?

Sample answer: Plains are flat. It is easier to grow plants on flat land than land that is steep.

3. Choose two landforms. How are they similar? How are they different?

Sample answer: Plains and valleys are low and flat. Plains can be bigger than valleys because valleys are between mountains.

Question 1: Circle the correct answer

1. Which image does show a slope?

a



b



c



2. The features of an area can be represented on a map using

a- Points

b- symbols

c- directions

3. Which are you least likely to see on a map of your neighborhood?

a- your house

b- the mall

c- a continent

4. Is a drawing of an area of earth's surface?

a- map

b- compass rose

c- symbols

5. It shows us where certain things are located on a map

a- symbols

b- mountains

c- Hills

6. Which shape we can use to model a mountain in a map

a- circle



b- triangle



c- square



7. Which is the highest landform?

a- mountain

b- plain

c- valley

8. An area of land that surrounded by water

a- valley

b- hill

c- island

9. large areas of land

a- mountains

b- continents

c- Hills

10. Mahra is traveling through land that is very flat. Which landform is he most likely seeing?

a- plains

b- mountains

c- hills

11. A student is drawing a map that shows different landforms. She wants to make a plain on her map. How should she draw a plain?

a- an area that is tall

b- an area that is flat

c- an area in between two mountains

12. What do the letters on the map represent?



a- oceans

b- continents

c- islands

13. Why plain is good place for farming?

a- it's tall

b- it's small

c- it's flat and wide

14. it is the stretch of land that can be seen from a place

a- landscape

b- map

c- compass rose

15. What is a compass rose

a- symbol on a map to show direction

b- a flat map used to show land

c- can show you patterns on a map

Question 2: Match the word to its picture

Symbols



Map



Compass rose



Landscape



Slope



Mountain



Hill



Plain



Valley

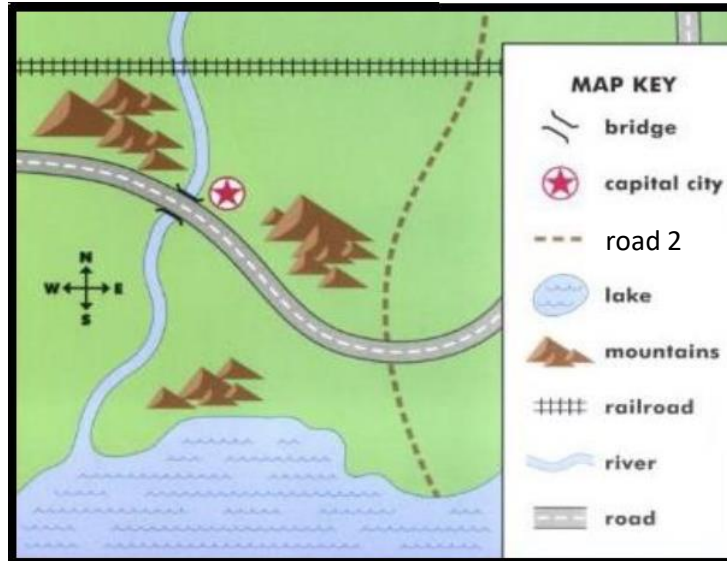


Question 3: Write the word in the correct place

Landscape map island mountain symbol continent

1. _____ Is the stretch of land that can be seen from a place
2. The tallest landform is _____
3. The biggest area of land is called _____
4. _____ is a drawing of an area of Earth's surface
5. A map key use a _____ to show where a feature is located
6. _____ is an area of land surrounded by water

Question 4: look at the map then answer the questions



1. The lake is in the (south – north)
2. How many mountains in this city?.....
3. There is no bridge in this map. (True – False)
4. Draw the symbol of capital city
5. There is no house on this map (True – False)
6. Circle the railroad on the map
7. One of map uses is to share information with others.....(True - False)

Question 1: Circle the correct answer

1. Which image does show a slope?

a



b



c



2. The features of an area can be represented on a map using

a- Points

b- symbols

c- directions

3. Which are you least likely to see on a map of your neighborhood?

a- your house

b- the mall

c- a continent

4. Is a drawing of an area of Earth's surface?

a- map

b- compass rose

c- symbols

5. It shows us where certain things are located on a map

a- symbols

b- mountains

c- Hills

6. Which shape we can use to model a mountain on a map

a- circle



b- triangle



c- square



7. Which is the highest landform?

a- mountain

b- plain

c- valley

8. An area of land that surrounded by water

a- valley

b- hill

c- island

9. Large areas of land

a- mountains

b- continents

c- Hills

10. Mahra is traveling through land that is very flat. Which landform is she most likely seeing?

a- plains

b- mountains

c- hills

11. A student is drawing a map that shows different landforms. She wants to make a plain on her map. How should she draw a plain?

a- an area that is tall

b- an area that is flat

c- an area in between two mountains

12. What do the letters on the map represent?



a- oceans

b- continents

c- islands

13. Why plain is good place for farming?

a- it's tall

b- it's small

c- it's flat and wide

14. It is the stretch of land that can be seen from a place

a- landscape

b- map

c- compass rose

15. What is a compass rose

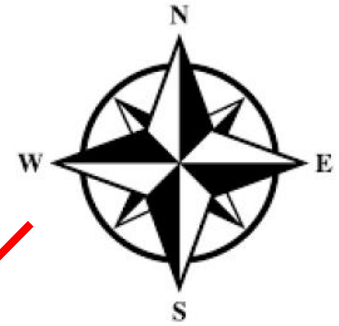
a- symbol on a map to show direction

b- a flat map used to show land

c- can show you patterns on a map

Question 2: Match the word to its picture

Symbols



Map



Compass rose



Landscape



Slope



Mountain



Hill



Plain



Valley

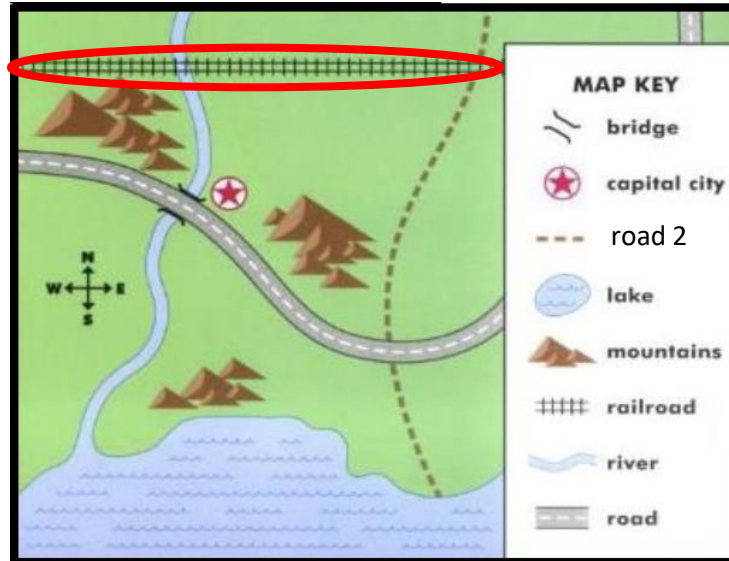



Question 3: Write the word in the correct place

landscape map island mountain symbol continent

1. Landscape Is the stretch of land that can be seen from a place
2. The tallest landform is mountain
3. The biggest area of land is called continent
4. Map is a drawing of an area of Earth's surface
5. A map key use a symbol to show where a feature is located
6. Island is an area of land surrounded by water

Question 4: look at the map then answer the questions



1. The lake is in the (south – north)
2. How many mountains in this city?.....20.....
3. There is no bridge in this map. (True – False)
4. Draw the symbol of capital city 
5. There is no house on this map (True – False)
6. Circle the railroad on the map
7. One of map uses is to share information with others.....(True - False)